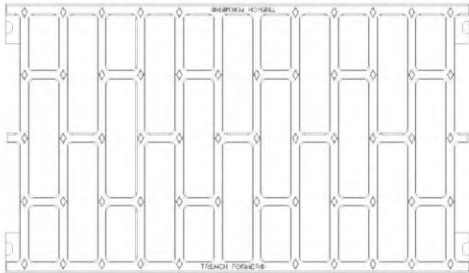
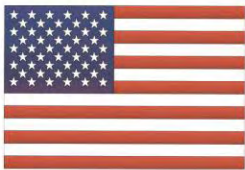


# Trench Former<sup>®</sup> XHD<sup>™</sup> 8/12/18

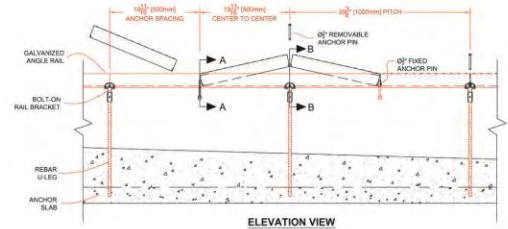
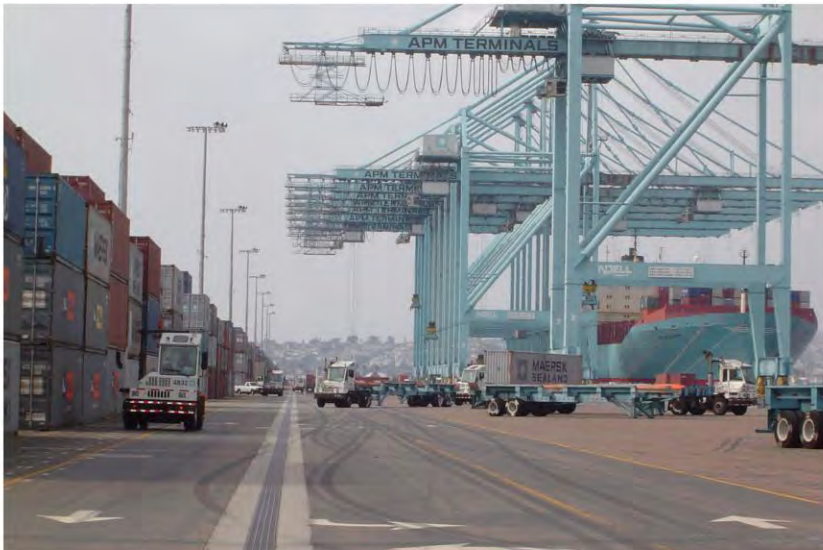
## Airport / Port Rated Trench Drain Forming Systems



Complies with  
"Buy American" Act



Made in USA



**ABT<sup>®</sup>, INC.**  
Advanced Building Technologies



[www.abtdrains.com](http://www.abtdrains.com)  
Today's Hydraulic Solutions

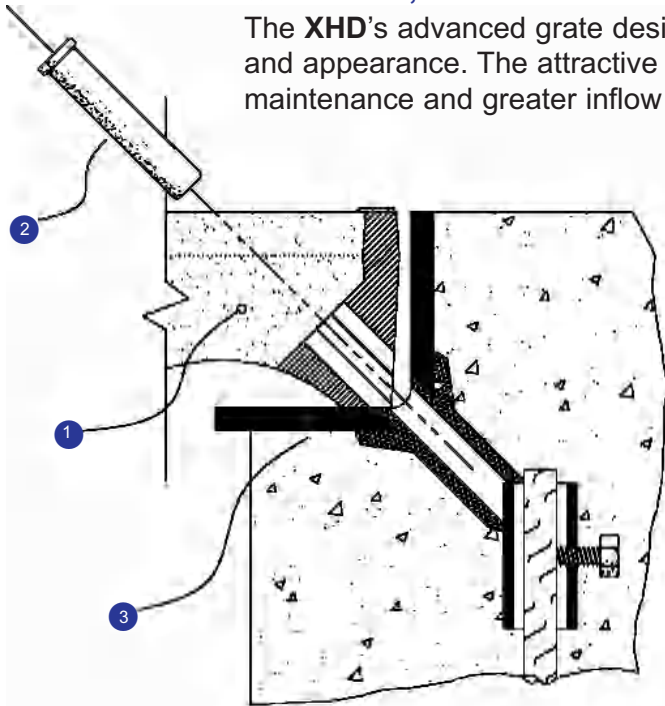
# The XHD™ 8 / 12 / 18 Technology

ABT, Inc.'s **XHD** performance family of trench drains provides a robust assembly of parts needed to handle the extreme requirements found specifically in airports, ports, and intermodal facilities. The **XHD** system goes far beyond an extra heavy duty grate. Its components and features were designed to offer ultimate performance with the best cost of ownership available.

## XHD System Components

### ① XHD 200,000+ lb. Ductile Iron Grates

The **XHD**'s advanced grate design is engineered to provide both performance and appearance. The attractive design provides lighter weight for ease of maintenance and greater inflow area with no sacrifice in strength.



### ② XHD 4 Point Non-Rigid Pin Lock Retention System

Utilizing the "Pin Lock System", both longitudinal and vertical retention are achieved. The non-rigid "Pin Lock System" eliminates the thermal induced stresses in the typical bolt down assemblies that cause concrete cracking. The pins do not become loose and back out as bolts do. Although four pins are used for retention, only one pin per grate must be removed for maintenance.

### ③ XHD Robust Frame Design

The large load bearing area and increased edge distance combined with the grate bearing location of the **XHD** system's frame maximizes load transference and reduces the probability of concrete shear failure below the frame. **XHD** does not utilize liners that create the failure liability by being sandwiched between the frame and concrete... such liner systems propagate failures by their low compressive strength, creep, and thermal expansion properties.

### Design Flexibility

The **XHD** system's Expanded Polystyrene (EPS) Formers can be configured for the Designer's special flow and depth requirements. A large range of trench depths, slopes, profiles and configurations provides the Designer with greater flexibility for challenging projects. Additionally, the system is pre-engineered and factory fabricated reducing the potential for construction error in the field.

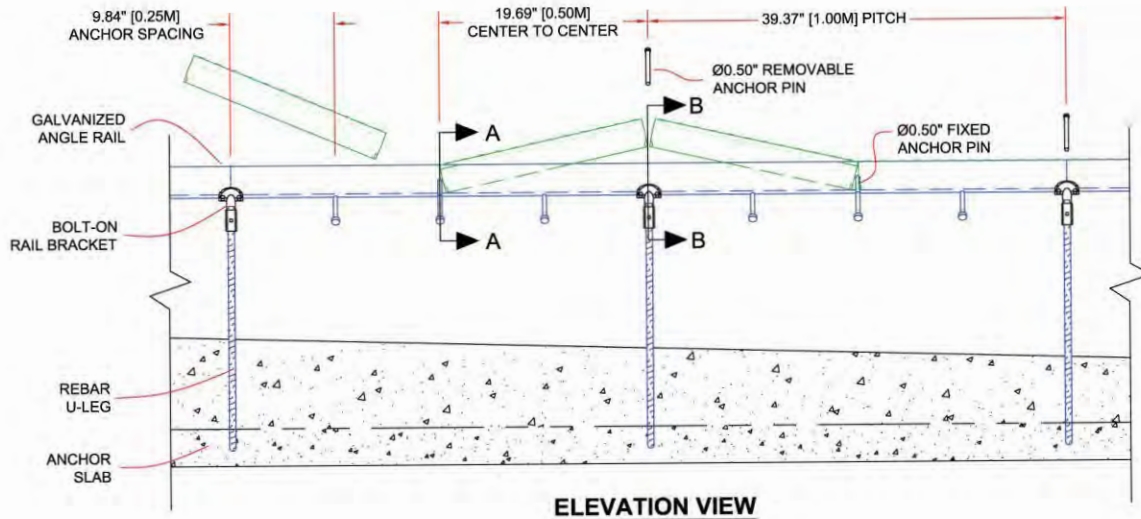
### Inspectability & Constructability

The **XHD** systems are easily inspected after concrete placement. Prior to service, inspections for voids below the frame can be observed and repaired. Such voids are concealed by other systems and will eventually lead to frame collapse or other failures. The **XHD** system installs easily and quickly compared to traditional cast-in-place trenches.



# XHD™ 8/12/18 (Formerly HD200™ /HD300™ /ZHD450™)

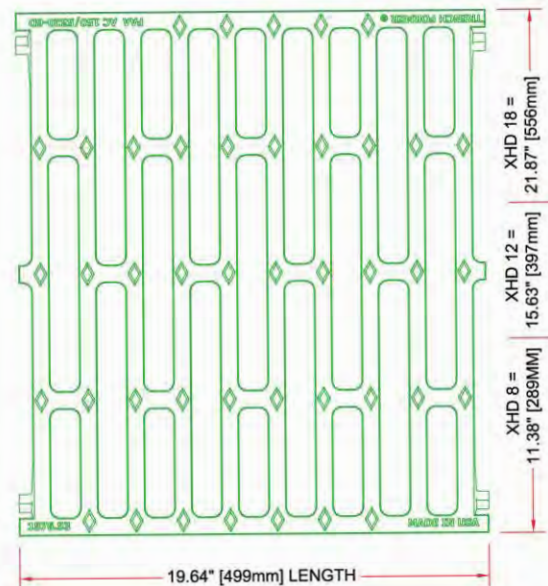
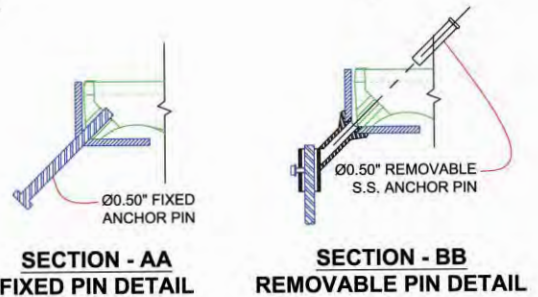
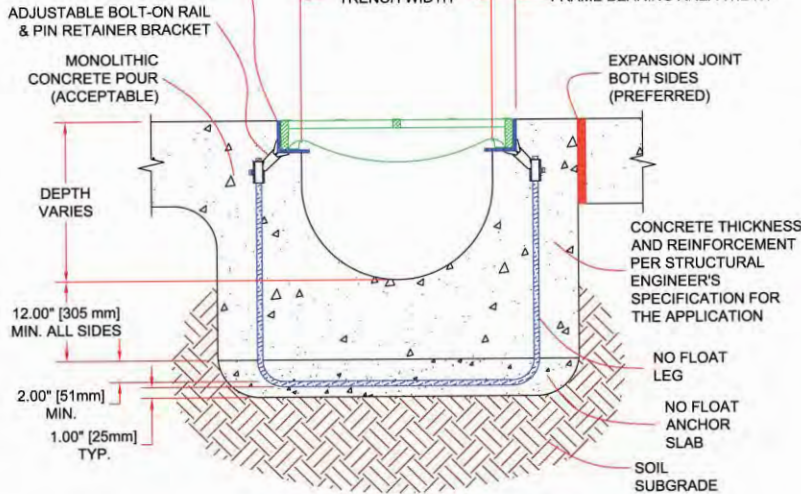
## Technical Data



XHD 8 = 2.50" x 2.50" x 0.25"  
 XHD 12 & 18 = 3.00" x 3.00" x 0.31"  
 ASTM A-36 GALV. STEEL ANGLE

XHD 8 = 8.00" [203mm]  
 XHD 12 = 12.00" [305mm]  
 XHD 18 = 18.00" [457mm]

XHD 8 = 2.00" [51mm]  
 XHD 12 = 2.25" [57mm]  
 XHD 18 = 2.25" [57mm]



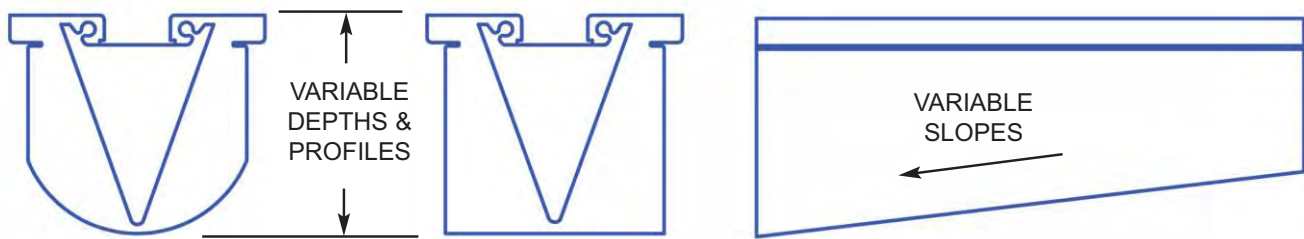
- DATA**
- Grate Proof Strength - 200,000+ Lbs.
  - Vertical Grate Restraint - 2,000 Lbs.
  - Longitudinal Grate Restraint - 10,000 Lbs.
  - Frames are ASTM A-36 Hot Dip Galvanized Structural Steel
  - All parts are made in U.S.A. and comply with "Buy American Act"
  - For Hydraulic Capacity for specific conditions, Drawings, Specifications, and other information; go to [www.abtdrains.com](http://www.abtdrains.com)

**DISCLAIMER:** The customer and the customer's architects, engineers, consultants and other professionals are completely responsible for the selection, installation, and maintenance of any product purchased from ABT, and EXCEPT AS EXPRESSLY PROVIDED IN ABT'S STANDARD WARRANTIES, ABT MAKES NO WARRANTY, EXPRESS OR IMPLIED, AS TO THE SUITABILITY, DESIGN, MERCHANTABILITY, OR FITNESS OF THE PRODUCT FOR CUSTOMER'S APPLICATION. Copies of ABT's standard warranties are available upon request. Trench Former® is a registered trademark of ABT, Inc.®. USA Patent Numbers 5,281,051; 5,348,421; 5,393,171; 5,399,047; 5,573,350; 5,702,204; 5,890,839; 6,443,656; 6,533,497; 6,926,245 : Canada 2,080,136; 2,131,866; 2,131,867; 2,139,405; 2,139,407 : Mexico 189,218; 189,436; 197,851 : Other US and foreign patents pending.

# Designed Right, Engineering that Saves.....

# Life Safety, Life Cycle....

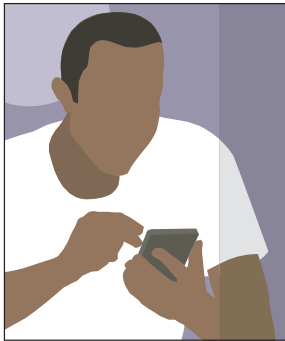
## Pre-Engineered E.P.S. Forms:



XHD's E.P.S. Foam Former design flexibility allows the Designer to select various system slopes, depths and section profiles to meet their specific requirements, site restrictions and hydraulics.

## Design Notes:

- Typical frame sections are 6.56' (2M). Frames are also available in 3.28' (1M) & 1.64' (0.5M).
- Auxiliary frames are available to facilitate "T's", "L's", intersections, radii and joints.
- All XHD system grates are 19.64" (0.5M) in length. Widths vary per system.



Call or E-mail us today and ask for our interactive hydraulic calculator.

For more information and design tools, go to [www.abtdrains.com](http://www.abtdrains.com).

- Hydraulic Design Guide
- ACAD Drawings & Details
- Specification Generator
- Additional Product Info
- PDF Catalogs
- Installation Guides
- Plan Notes
- Performance Specifications



# ABT, INC.®

P.O. Box 837, 259 Murdock Road, Troutman, NC 28166  
800-438-6057 \* 704-528-9608 \* Fax: 704-528-5478  
Visit us @ [www.abtdrains.com](http://www.abtdrains.com)